



Breakey & Co



Enfield Street, Pemberton

Offers in Excess of £89,995

- Two bedrooms
- Terraced
- Popular location
- Well presented throughout
- Perfect for a first time buyer
- Close to amenities
- NO CHAIN
- Viewings essential
- EPC- E



Breakey & Co



DESCRIPTION

New to the market with the benefit of NO CHAIN is this lovely two-bedroom terraced property. Enfield Street presents a fantastic opportunity for a first-time buyer or young family looking to get onto the property ladder. Locally the accommodation rests with handy access to good schools, amenities, and major transport links. Internally the accommodation is arranged across two floors and in brief comprises of; a welcoming entrance vestibule, spacious lounge, and the fitted kitchen/ diner. To the first floor, the landing area gives access to two bedrooms and the tiled family shower. Externally you will find a low maintenance yard to the rear and street parking is available to the front elevation. Early viewings are highly recommended to avoid disappointment. NO CHAIN.





Breakey & Co



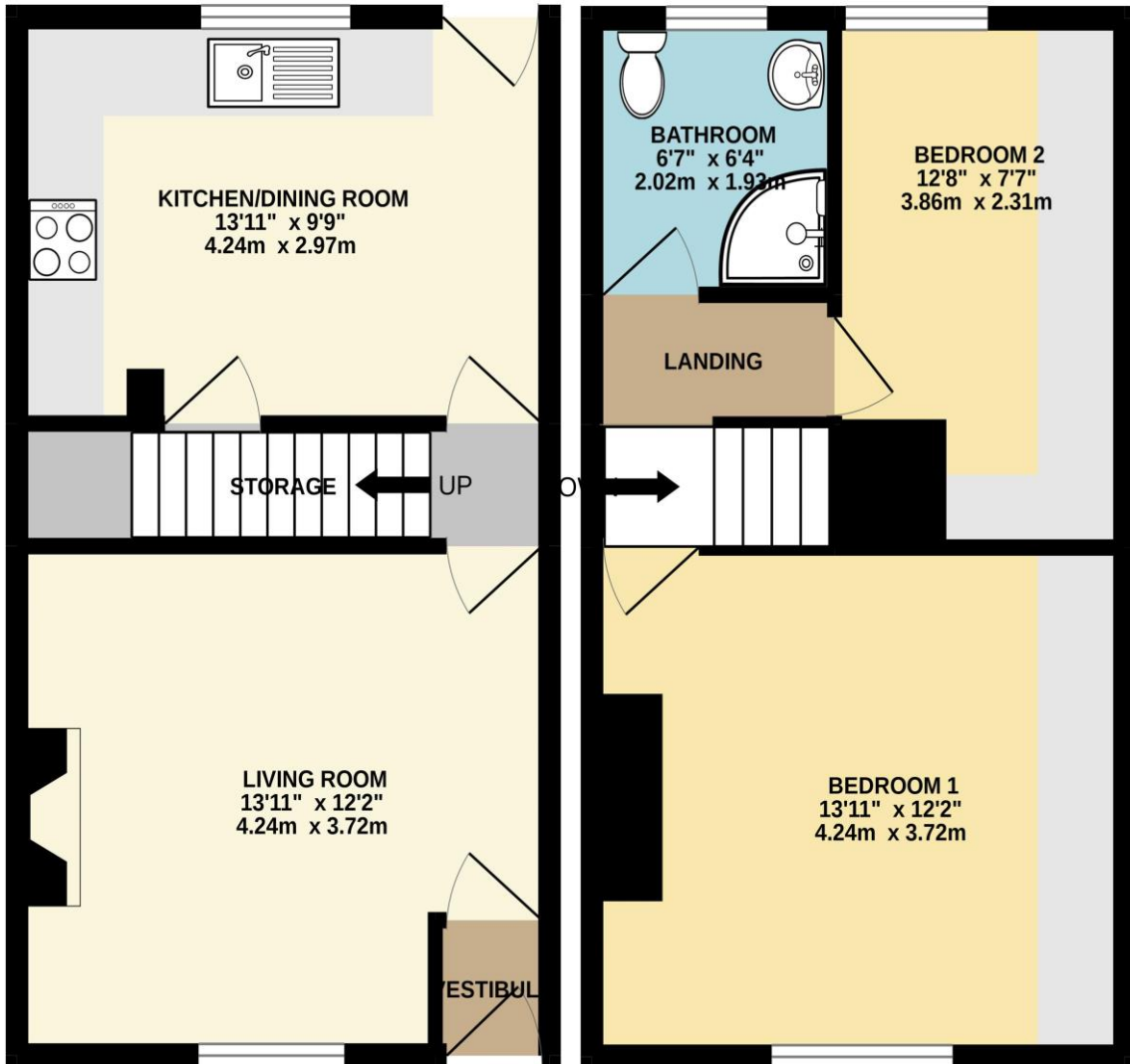


Breakey & Co



GROUND FLOOR
339 sq.ft. (31.5 sq.m.) approx.

1ST FLOOR
330 sq.ft. (30.7 sq.m.) approx



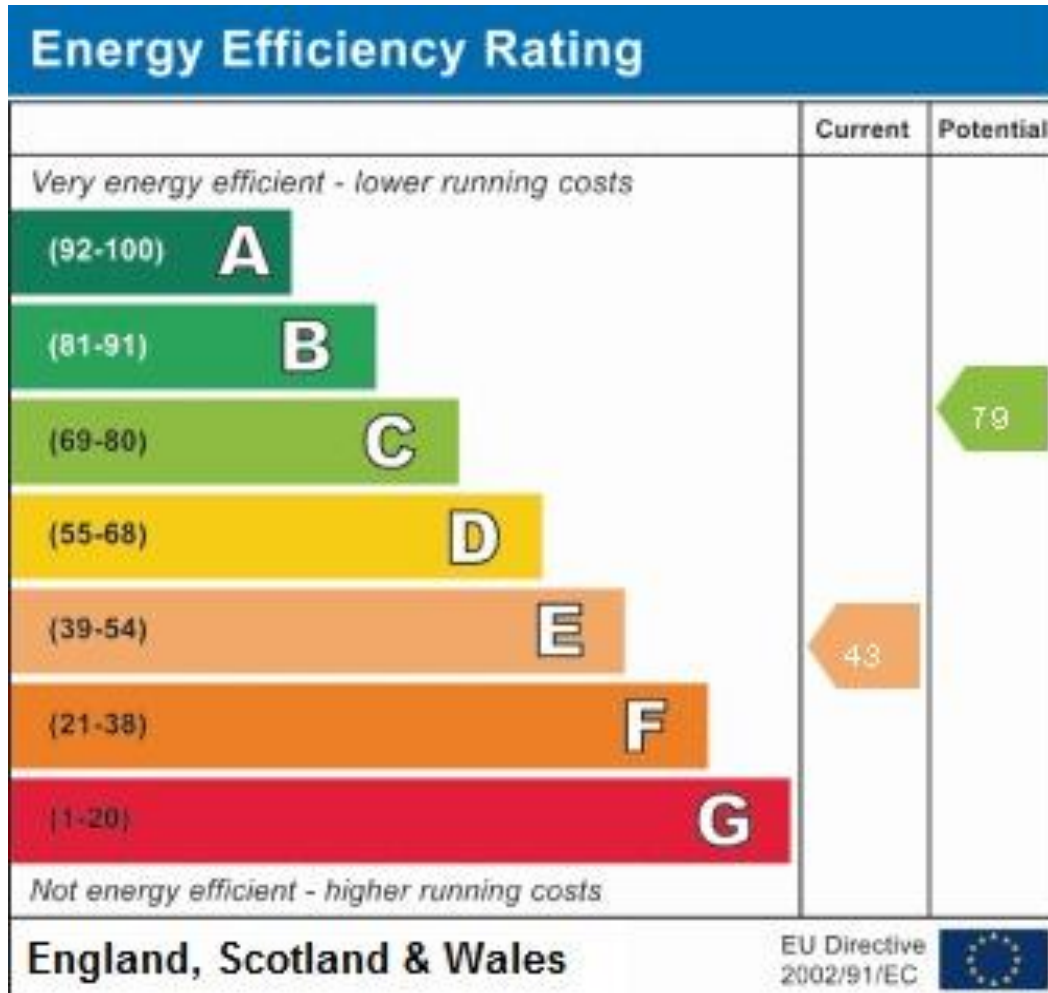
TOTAL FLOOR AREA : 669 sq.ft. (62.2 sq.m.) approx.

Whilst every attempt has been made to ensure the accuracy of the floorplan contained here, measurements of doors, windows, rooms and any other items are approximate and no responsibility is taken for any error, omission or mis-statement. This plan is for illustrative purposes only and should be used as such by any prospective purchaser. The services, systems and appliances shown have not been tested and no guarantee as to their operability or efficiency can be given.

Made with Metropix ©2022



Breakey & Co



57-59 Ormskirk Road

Saddle Junction

Wigan

Lancashire

WN5 9EA

info@breakeyandco.com

WN5 9EA